

Installing Summa OPOS Plugin for Adobe Illustrator on Mac OS X



Legendary Performance

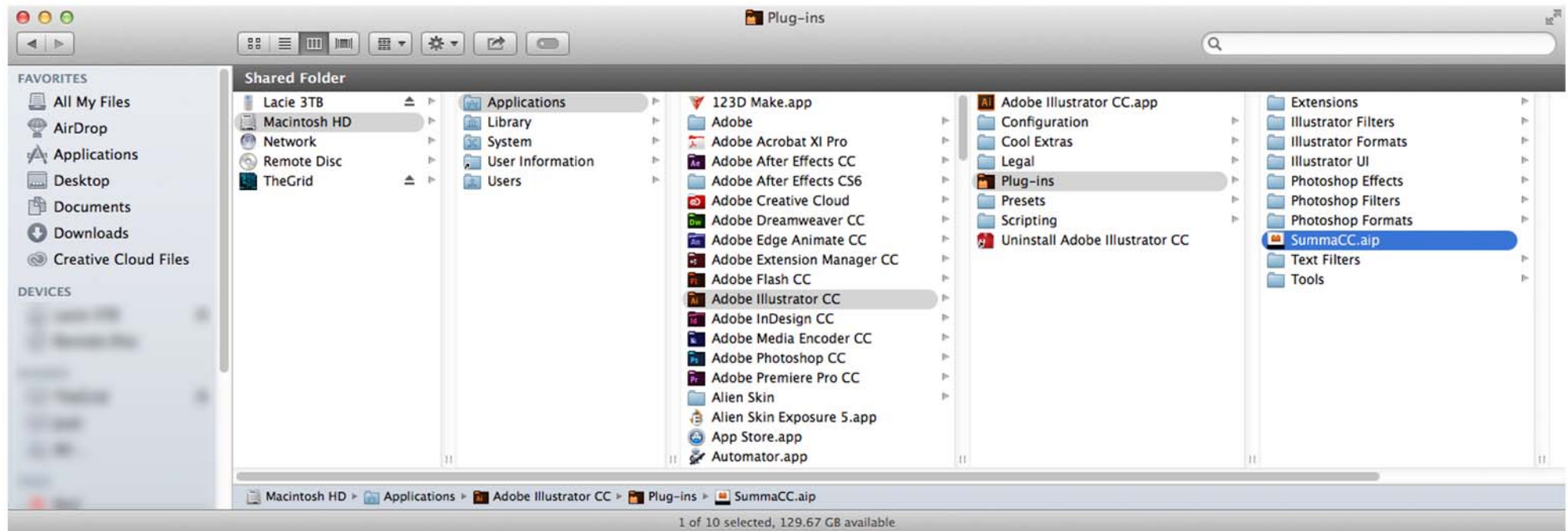
Illustrator CC 2014: Drag or copy the SummaCC.aip file to Macintosh HD/Applications/Adobe Illustrator CC 2014/Plug-ins.

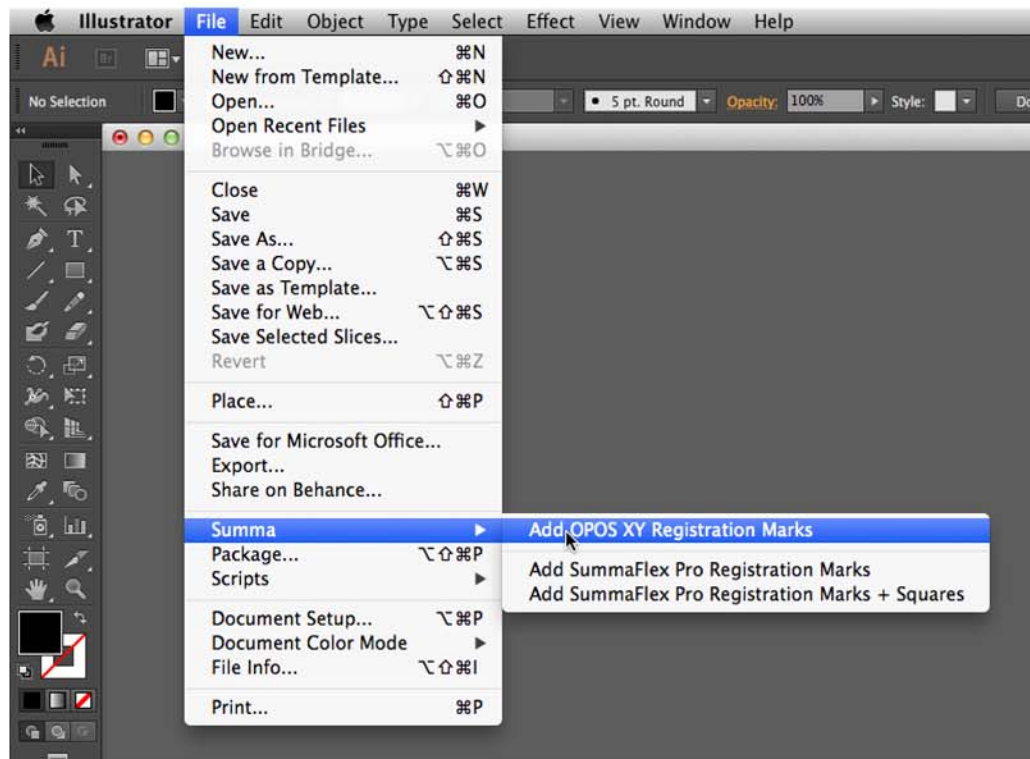
Illustrator CC: Drag or copy the SummaCC.aip file to Macintosh HD/Applications/Adobe Illustrator CC/Plug-ins.

Illustrator CS6: Drag or copy the SummaCS6mac.aip file to Macintosh HD/Applications/Adobe Illustrator CS6/Plug-ins.

Illustrator CS5: Drag or copy the SummaCS4mac.aip file to Macintosh HD/Applications/Adobe Illustrator CS5/Plug-ins.

Illustrator CS4: Drag or copy the SummaCS4mac.aip file to Macintosh HD/Applications/Adobe Illustrator CS4/Plug-ins.





After the Summa plug-in has been copied to the Illustrator plug-ins folder, relaunch Illustrator. If installed correctly, a new option called “Summa” will be available under “File” on the top menu bar. Simply hover over “Summa” and select “Add OPOS XY Registration Marks” if you are contour cutting on a roll-fed Summa cutter. There are also two options available to automatically generate SummaFlex Pro registration marks compatible with Summa F Series flatbed cutting systems.



A locked “Regmark” layer will appear and the file now contains the appropriate registration marks for contour cutting on your chosen Summa equipment.