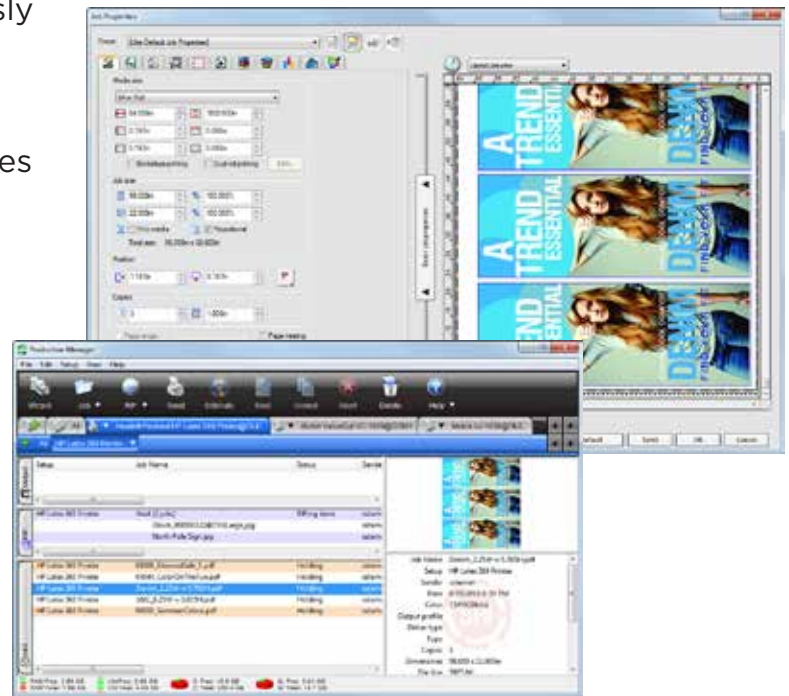




This product has everything wide-format print businesses need for easy print and print-and-cut production, without the need for direct-to-vinyl cutting. In addition to versatile nesting and tiling features, it also includes banner finishing, textile step-and-repeat, spot color matching and more. Also enjoy the industry's most seamless print-and-cut workflow that allows you to add multiple contour cut lines to any design in a matter of seconds.

## POPULAR PRODUCTION FEATURES AND BENEFITS

- Drives two wide-format printers simultaneously
- Quickly print and print-and-cut wide-format jobs from one application
- Fast, native PDF RIP handles file transparencies and complex files with ease
- Scale, crop, tile and color correct in seconds right from within Production Manager
- Save the most media with automatic or manual nesting of jobs
- Automate common job preparation steps with job presets
- Automatically match PANTONE® spot colors
- Find exact matches of job spot colors in seconds using the spot color swatch tool
- Produce stunning metallic and white ink jobs easily with the automated underbase, choke and bleed tools




### Design Features

- Complete suite of bitmap, vector, text and effects tools
- Much easier and faster to use than other design software for wide-format job prep
- Easily design direct-to-vinyl signs with multiple colors, text and vector graphics
- Add one or more contour cut paths to graphics in seconds
- Quickly create a variable-data print run with the auto-serialization feature

### The Next Step

- Upgrade to FlexiSIGN & PRINT
- Upgrade from an older version of FlexiPRINT or PhotoPRINT
- Contact us to find an authorized dealer near you

# Top SAi Flexi Features

		SIGN & PRINT	Flexi (subscription)	PRINT	SIGN	DESIGNER	Flexi Design (subscription)
DESIGN	Artwork Approval Tool	●	●	●	●	●	●
	Animated Cut Viewer	●	●	●	●	●	●
	Define Cut Order	●	●	●	●	●	●
	3M, Avery, etc. Vinyl Color Palette Libraries	●	●	●	●	●	●
	Multiple Contour Cut	●	●	●	●	●	●
	Gradients - SpotColor, RGB, CMYK	●	●	●	●	●	●
	Smooth Shadows	●	●	●	●	●	●
	Black & White and Color Trace Vectorization	●	●	●	●	●	●
	Adobe® PhotoShop® Bitmap Plug-In Support	●	●	●	●	●	●
	Auto Serialize Number and Text Fields	●	●	●	●	●	●
	QR Code Creator for Interactive Signage	●	●	●	●	●	●
	True Shape Nesting for Contour Cutting	●	●	●	●	●	●
	Grade 2 Braille	●	●	●	●	●	●
	Data Matrix	●	●	●	●	●	●
PRODUCTION	Interactive Tiling	●	●	●	●		
	Direct Vinyl Cutting	●	●		●		
	Banner & Canvas Finishing Tools	●	●	●			
	Textile Step & Repeat	●	●	●			
	Industry-Leading Print & Cut Workflow	●	●	●			
	Smart Hot Folders for Automated Workflow	●	●	●			
PRINTING	Full set of small to large format printer drivers	●	●	●			
	HTML Job Log for Production Reporting	●	●	●			
	Simultaneous Printing	3	5	2			
	Powerful Visual Tiling Tool	●	●	●			
	Automated and Manual Media-save Nesting	●	●	●			
COLOR MANAGEMENT	Choke & Bleed for Metallic and White Ink	●	●	●			
	CleanColor™ for Pure Hue	●	●	●			
	PANTONE® and Custom Spot Color Matching	●	●	●			
	Easy and Fast Re-Calibration of Media	●	●	●			
	Quick Fine-Tune Spot Color Matching Tool	●	●	●			
	Color Replacement Tool	●	●	●			
	Wizard-Based ICC Media Profile Creation	●	●	OPT			
	 New in Flexi 12						

SAi Flexi is a trademark of SAi; Adobe is a registered trademark of Adobe Systems, Inc.; All other trademarks are the property of their respective owners. ©2015 SAi. All Rights Reserved.